



FACT SHEET OVERVIEW

- Date: June 28 to August 1 (5 weeks)
- Arrival and department date: Every Sunday
- Pick up and drop off airport: Boston Logan International Airport (BOS)
- Juniors Program (Age 7 - 12) : Residence and Self-arranged
- Teens Program (Age 13 - 17) : Residence and Self-arranged
- Robotics Program (Age 13 - 17) : Residence and Self-arranged



TAMWOOD CAMPS

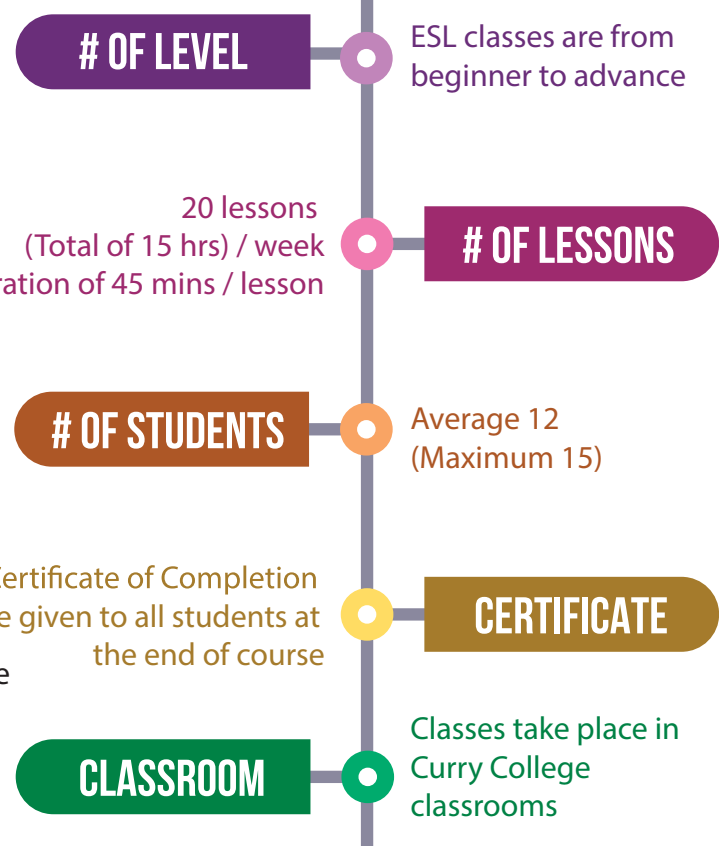
L
I
V
E
@
C
O
U
R
S
E

- Number of beds per room:**
 - 1 - 2 beds, each suite has 4 bedrooms, a common lounge and 2 bathrooms
- Bedroom:**
 - wireless internet, computer desk dresser and /or closet per student
- Bathroom:**
 - each suite has with 2 toilets sinks and showers.
- Security:**
 - Around the clock care by Tamwood live-in staff & campus security. Security key card entry to the building and to the student rooms.
- Internet:**
 - Wireless internet available throughout the building.
- Laundry:**
 - Once/ week which is included in camp fees



TAMWOOD CAMPS

LEARN





CURRY COLLEGE CAFETERIA



Meal

- . All meals are served at Curry College cafeteria located close to the residence.
- . Residential campers receive 3 hot meals / day : Breakfast, lunch and dinner.
- . Meals are in Buffet Style.
- . Self-arranged campers receive **ONLY** lunch.
- . Lunch box and restaurant dinner are provided on full day excursions for all campers.

ACTIVITIES



ON CAMPUS & EXCURSION

ON CAMPUS ACTIVITIES:

CURRY COLLEGE FACILITIES: Victory fields, sports field and gym

CURRY RECREATION POOL: Swimming Pool

EXCURSIONS:

At least 2 half day excursions and 1 full day excursion per week are included in the package. All excursions listed on the schedule are included.

SPECIAL PROGRAM HIGHLIGHTS:

CAMPUS TOUR:

Themed campus tour which encourages campers to develop teambuilding, leadership or STEAM skills.

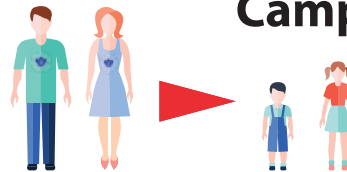
CAMPER WELCOME NIGHT:

Each Monday will be a night dedicated to welcoming new campers' arrivals, teaching everyone the Tamwood Dance, announcing the WEEKLY CHALLENGE, explaining the TAMWOOD CULTURE.

WEEKLY CHALLENGES:

Each week there will be a weekly challenge where TEENS across all 7 camps will complete for a surprise treat at DISCO!

Camper to Staff Ratio



Juniors:	6 : 1 (Average)
	9 : 1 (Maximum)
Teens:	12 : 1 (Average)
	15 : 1 (Maximum)
Overall:	8 : 1



NATIONALITY MIX:

In 2019, we had campers from 17 different countries .

TOP THREE:

1. Brazil	(40%)	
2. Japan	(14%)	
3. China	(12%)	