



## FACT SHEET OVERVIEW

- Date: June 28 to Aug 01 (5 weeks)
- Arrival and departure date: Every Sunday
- Pick up and drop off airport: Vancouver International Airport (YVR)
- Juninor Program ( Age 7 - 12 ) : Residence and Self-arranged
- Teens Program ( Age 13 - 17 ) : Residence and Self-arranged.



# TAMWOOD CAMPS

## LEARN

# TAMWOOD CAMPS

# L I V E @ B A S E ||

- Number of beds per room:**
  - 1 bunk bed / room (sleeps 2 people)
- Bedroom:**
  - Common space, kitchenette (Fridge, microwave, dresser and closet.)
- Bathroom:**
  - toilets, sink , and shower within each suite.
- Security:**
  - Around the clock care by Tamwood live-in staff & campus security. Security key card entry to the building and key to suite.
- Internet:**
  - Wireless internet available in common room.
- Laundry:**
  - Once/ week which included in programme fee

### # OF LEVEL

ESL Classes are from beginner to advance

20 lessons  
(Total of 15 hrs) / week  
Duration of 45 mins / lesson

### # OF LESSONS

### # OF STUDENTS

Average 12  
(Maximum 15)

Certificate of Completion will give to all student at the end of course

### CERTIFICATE

### CLASSROOM

Classes take place in the Tamwood Adult Language School in Whistler Village



## BLACKCOMB BASE II CAFE



## Meal

- . All meals are served at Blackcomb Base II cafeteria located close to the residence.
- . Residential campers receive 3 hot meals / day : Breakfast, lunch and dinner.
- . Meals include 1 main, 2 sides, dessert and a drink  
( Ex: Chicken, Fries, Salad, Cookie and Juice)
- . Homestay or Self-arranged campers receives **ONLY** lunch.
- . Lunch box and restaurant dinner are provided on full day excursions for all campers.

## ACTIVITIES

### ON CAMPUS ACTIVITIES:

**MEADOW PARK RECREATION CENTRE:** Sport fields, Gym, and Basketball court

**RAINBOW PARK (ALTA LAKE):** Kayaking, Swimming, and Beach Sports

**BLACKCOMB BASE 2:** Large open dining hall also used for evening activities.

**LOST LAKE:** Hiking, Sports and STEAM Challenges

### EXCURSIONS:

- At least 2 half-day excursions and 1 full day excursion per week are included.
- Week #1,3,5: Overnight Camping trips with outdoor activities such as High Ropes or Rafting
- Week #2, 4: Overnight Hotel trip to Vancouver for local sight seeing



## ON CAMPUS & EXCURSION

## SPECIAL PROGRAM HIGHLIGHTS:

### CAMPUS TOUR:

A campus tour which encourages campers to develop teambuilding, leadership or STEAM skills.

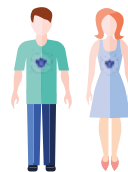
### CAMPER WELCOME NIGHT:

Each Monday will be a night dedicated to welcoming new campers' arrivals, teaching everyone the Tamwood Dance, announcing the WEEKLY CHALLENGE, explaining the TAMWOOD CULTURE.

### WEEKLY CHALLENGES:

Each week there will be a weekly challenge where TEENS across all 7 camps will complete for a surprise treat at DISCO!

## Camper to Staff Ratio



Juniors:	6 : 1 (Average)
	9 : 1 (Maximum)
Teens:	12 : 1 (Average)
	15 : 1 (Maximum)
Overall:	8 : 1



## NATIONALITY MIX:

In 2019, we had campers from 18 different countries .

### TOP FIVE:

1. Mexico (27%)	
2. Japan (25%)	
3. Brazil (12%)	
4. Taiwan (11%)	
5. China (8%)	

